



Date: 4.7. - 6.7.2022

Organizer: OK Kamenice, z. s.

Centre: meadow near the village of Kamenný Přívoz, <https://mapy.cz/s/cubefukahoh>

Warning: a railway line runs through the centre of the race, crossing it outside the railway crossing is strictly forbidden and will lead to immediate disqualification of the competitor.

Trains run very slowly over the level crossing, but always remember to look around when crossing.

Categories:

D10, D12, D14, D16, D21A, D21B, D35A, D35B, D45A, D45B, D55A, D55B, D65

H10, H12, H14, H18, H21A, H21B, H35A, H35B, H45A, H45B, H55A, H55B, H65A, H65B, H75

HD10F - ribbon marked course,, only for children up to 10 years old

HDR - ribbon marked course, for children up to 10 years old accompanied by parents

T-FIT - medium difficulty track with free start

Ranking: categories D21A, D21B, H21A, H21B count towards czech ranking with a coefficient of 1.00.

Start lists: published in IS ORIS, in the event center and at the start.

Results: intermediate results will be displayed on the screen in the race center and on the website <https://liveresultat.orientering.se/>. Several radio controls will be placed in the forest. Final results will be posted in the event center and on IS ORIS after the end of the stage. The overall results after E3 will be posted in the race center and in IS ORIS.

Prize giving: as soon as possible after the end of E3 the first three competitors in the overall ranking of the three-day race will be awarded (diploma, medals, prizes) in all categories. Only the T-FIT category is not announced, in the HDR category all participants will receive a small prize.

Stages:

E1 4.7.2022 (Monday) 16:00 middle distance

E2 5.7.2022 (Tuesday) 10:00 long distance

E3 6.7.2022 (Wednesday) 10:00 shortened long distance

Guideline times according to Annex 2 of the Competition Regulations of the OB section (some guideline times may be adapted to the nature of multi-day competitions).

Overall results will be calculated as the simple sum of the competitor's times in all three legs. A disqualification in one of the stages will also mean a total disqualification.

Control descriptions: will be available for self-collection at the race center as well as printed on the maps

Terrain: The northern and central part of the area is flat to slightly rolling terrain, very varied in vegetation, in many places areas of dense forest with variously reduced runnability. The southern, western and eastern parts of the area are made up of slopes (steep in places) with a number of granite boulders, boulders and small crags, including several old granite quarries. Local remains of gold mining activity. Medium density road network. Intensive clearance of bark beetle calamity (many new large clearings).

Map: see individual stages below.



Training area will not be ready.

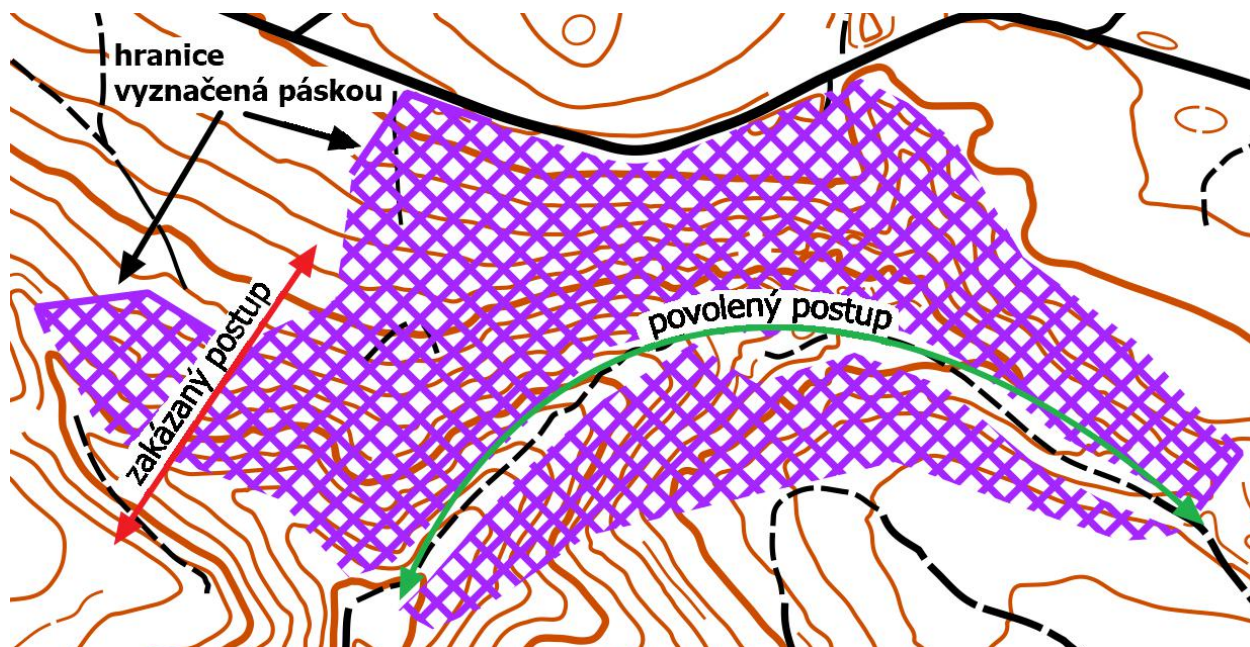
Special map symbols will be indicated in the map legend.

Maps are not collected at the finish line in any stage, we rely on **fair-play**.

Restrictions: there are no restrictions on running clothes and footwear during the race.

Prohibited areas: there are several prohibited areas in the race area, these are the Vlčí Rokle and Grybla natural reserves. These areas will be marked on the map with the map marker 709 Inaccessible area. In selected places the boundary of the restricted area will also be marked with warning tape in the terrain (also marked on the map).

In some stages it will be possible to run through the restricted area on the road that passes through the area, see the following example:



In addition, the railroad adjacent to the plant center is also a prohibited area. This railway may only be crossed on a level crossing. See the race center plan at the end of the instructions.

Failure to respect the prohibited areas will be punished by immediate disqualification.

The woods north of the parking area for competitors not staying at the campsite is considered race area and may only be entered on the way to the start, from the finish and during the actual race.

Event office: Monday, July 4, 2022 from 1:00 pm to 3:00 pm at the race center, other days from 8:30 am to 9:30 am at the race center. You can only present for the whole club (documents, meal vouchers, accommodation).

Late Entries: limited quantity at the presentation. Openings are in the D21A, H21A, D45A, H45A, D55A, H55A, T-FIT categories.

Information: more information about the races can be found on the race page, any questions should be sent to prihlasky@okkamenice.cz.

Punch system: SPORTident contact mode, SI card read-out at the event center, SI units will **not** be set to BEACON contactless stamping mode. In case of a non-functioning SI unit at the control, the competitor will stamp mechanically into the map.

The competitor is obliged to CLEAR and CHECK his chip in the starting corridors. The SIAC OFF unit will be placed in the last corridor.

The competitor is obliged to read-out his SI card at the race center after the race even if he has not finished the race. In the event of a malfunctioning SI unit, the competitor is required to show the mechanical stamping to the referee at the finish line.

Accuracy of timekeeping - to whole seconds.

Regulations: the race is held according to the valid Rules of the OB and Competition Rules of the CSOS Orienteering Section and the Implementing Regulations for the OB Section Competitions for 2022.

Accompanying programme: on Tuesday afternoon there will be an orienteering race with migrating controls (SMIK). Instructions and results in a separate race in IS ORIS.

Protests: deposit 400 CZK. In person in the hands of the respective Chief Referee or send to the address of the Chief Referee E1: Adam Hajek, ob1vky@gmail.com

Accommodation: the organizer provides accommodation in the camp, price 150,- CZK for children up to 14 years, 250,- CZK for others. Accommodation will be differentiated from non-accommodation by a wrist band. They can be bought at the presentation. Other accommodation is not provided by the organizer.

Club tents: space for the club tents will be reserved in the southeastern part of the assembly area, see the plan at the end of the instructions.

Washing: there will be a fire truck at the assembly area Monday 4.7: 16:30 - 19:00, Tuesday 5.7: 11:30 - 14:30, Wednesday 6.7: 11:00 - 14:00, also possible in river Sazava.

Drinking water: will be available at the race center.

Catering: take advantage of the catering at the event center, which will be available throughout the race with a variety of food. Please note that the catering tent is for food and beverage consumption and not to be used as a changing room.

Parking: in the race center, to be organized by the organizers. Parking fee 100,- CZK/race. Parking for competitors staying in the camp is at the tents, accessed road from Prosečnice. Parking for others is on the adjacent meadow, access from Kamenný Přívoz. See the race center plan.

Distance to parking - race center: 100 m.

Nursery: change - there will be **no nursery** for pre-school children at the assembly area.

Race director: Tomáš Rusý

Estimated composition of the jury: Miroslav Kovář (SJC), Eliška Siegllová (PGP), Zdeněk Mazal (VBM)

PROTECTION OF PERSONAL DATA AND PHOTOGRAPHING (GDPR): During the event, news photographs will be taken to inform the public about the race, etc. in accordance with Section 89 of Act No. 89/2012 Coll., Civil Code. In addition, photographs may be taken for the personal use of the competitors (as a reminder of the race, for the promotion of the OB club), especially of the announcement of the results and the finish line. If you do not agree to be photographed, please explicitly notify the photographer.





STAGE 1 - MIDDLE

Monday 4.6.

Course Setter: Boris Navrátil, R3

Head Referee: Adam Hájek, R3

Map: Matfyzácká stěna, 1 : 10 000, equidistance = 5 m, format A4, author Roman Horký, Adam Hájek, partial revision 2022 map key ISOM2017-2, maps will be printed on pretext.

Start: Interval, 00 = 16:00, start interval is 4 minutes in all categories, because of stretching of the start to allow parents to take turns in babysitting. The T-FIT, HDR and HD10F categories have a free start from 0 - 100.

Warning: the curses cross a lot and the controls are very close together, within the rules. Pay close attention to the track layout and control codes.

There is a small quarry at the end of the course, before the last control, where there is a risk of falling if you are not careful. The spot will be marked with warning tape.

Distances:

Centre - Start: 1400 m, elevation 130 m, marked with blue and white flags, the route to the start leads about 300 m along the 2nd class road and then crosses the railway line, please take extra care.

Centre - Finish: 100 m.

Live results and radio controls: on the web <https://liveresultat.orientering.se/followfull.php?lang=cz&comp=23253>

Refreshments: drinking water and water with juice at the finish.

Time Limit: 90 minutes.

Finish Closure: 19:30





STAGE 2 - LONG

Tuesday 5.6.

Course Setter: Kristýna Hlubučková, R3

Head Referee: Vojtěch Kettner, R3

Maps:

Hrdlo 442, 1 : 10 000, A3 format, categories D45A, H45A, H45B, H55A, H55B, T-FIT

Hrdlo 442, 1 : 15 000, format 250 x 350 mm, category DH16 - DH35

Studený Vlčín, 1 : 10 000, A4 format, categories DH10 - DH14, D45B, D55 - D65, H65 - H75, HDR, HD10F

equidistance = 5 m, author Roman Horký, partial revision 2022 map key ISOM2017-2, maps will be printed on pretext.

Start: interval, 00 = 10:00, starting interval is 4 minutes in all categories. T-FIT, HDR and HD10F categories have a free start from 0 - 100.

Distances:

Center - Start: 2000 m, elevation 130 m, marked with blue and white flags, the route to the start leads about 300 m along the 2nd class road and then crosses the railway line, please take extra care.

Center - Finish: 2000 m, identical to the route to the start.

Start and finish are in the same place, parents are advised to take turns to watch their child at the start.

Live results and radio controls: on the web <https://liveresultat.orientering.se/followfull.php?lang=cz&comp=23254>

Refreshments: drinking water and water with juice at the finish. Drinking water between the controls.

Time Limit: 150 minutes.

Finish Closure: 14:45



STAGE 3 - SHORTENED LONG

Wednesday 6.6.

Course Setter: Jakub Glonek, R3

Head Referee: Lukáš Kettner, R3

Map: 1 : 10 000, e = 5 m, format 300 x 350 mm by Roman Horký, Adam Hájek, partial revision 2022 map key ISOM2017-2, maps will be printed on pretext.

Start: interval, 00 = 10:00, starting interval is 4 minutes in all categories. T-FIT, HDR and HD10F categories have a free start from 0 - 100.

Warning: there is a small quarry at the end of the track, before the last control, where there is a risk of falling if you are not careful. The place will be marked with warning tape.

Distances:

Center - Start: 1400 m, elevation 70 m, marked with blue and white flags.

Center - Finish: 100 m.

Live results and radio controls: on the web <https://liveresultat.orientering.se/followfull.php?lang=cz&comp=23255>

Refreshments: drinking water and water with juice at the finish. Drinking water between the controls.

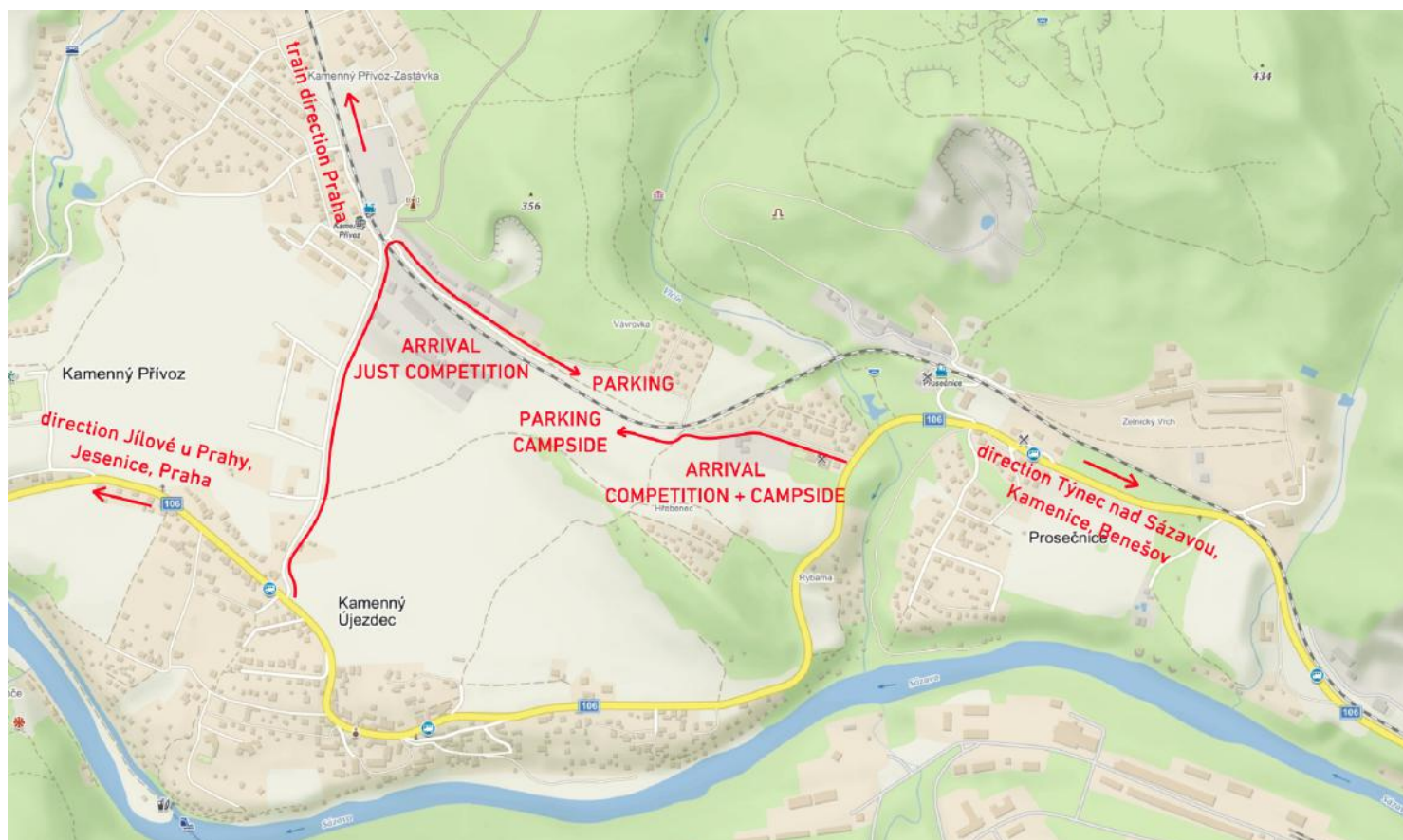
Time Limit: 120 minutes.

Finish Closure: 14:00



ATTACHMENTS

Arrival plan:



Event center plan:



Course lengths:

	E1 - middle			E2 - long			E3 - shortened long		
	length[km]	climb [m]	number of controls	length[km]	climb [m]	number of controls	length[km]	climb[m]	number of controls
D10	1,8	35	7	1,9	50	7	1,8	30	8
D12	2,1	75	11	2,2	60	7	2,7	60	13
D14	3,0	110	15	3,7	90	7	3,3	135	14
D16	3,2	110	16	4,3	180	8	4,3	175	18
D21A	3,9	160	20	7,7	360	13	6,1	210	20
D21B	3,6	130	19	6,4	275	10	4,3	150	13
D35A	3,6	130	19	5,8	290	9	5,0	185	15
D35B	3,3	125	17	5,4	235	8	3,9	150	15
D45A	3,3	95	17	5,3	230	8	4,4	180	16
D45B	3,1	75	15	4,8	170	11	3,4	130	15
D55A	2,7	90	14	4,1	165	9	3,3	130	11
D55B	2,3	75	12	3,5	145	7	2,4	65	12
D65	2,2	60	11	3,2	130	7	2,7	65	13
H10	1,9	55	8	1,9	50	7	1,8	35	8
H12	2,3	70	13	2,2	60	7	2,8	60	13
H14	3,2	90	17	4,6	120	12	4,2	165	12
H18	3,8	130	19	7,7	360	13	6,0	200	17
H21A	4,8	180	25	9,7	490	14	8,7	330	24
H21B	4,2	135	25	7,4	360	11	5,2	200	18
H35A	4,1	140	22	8,2	395	11	6,4	260	15
H35B	3,6	125	19	7,7	360	13	4,4	175	14
H45A	3,7	140	20	7,1	340	12	5,6	185	14
H45B	3,3	110	17	6,5	320	12	4,1	180	12
H55A	3,3	90	17	6,4	275	10	4,8	195	14
H55B	2,5	70	12	5,3	230	8	3,3	140	13
H65A	2,7	75	15	4,8	170	11	4,0	155	14
H65B	2,5	75	12	4,1	165	9	2,7	80	11
H75	2,5	75	11	3,2	130	7	2,9	90	13
HDR	2,6	55	8	3,0	70	7	2,6	40	6
HD10F	2,6	55	7	3,0	70	7	2,6	40	6
T-FIT	3,5	85	17	5,5	260	9	3,2	100	17

PARTNERS

