

Bulletin

Cena východních Čech 2016

nice three-days orienteering competition in famous and new terrains.

Organizer

OK99 Hradec Králové

Date

26th - 28th August 2016 (Friday to Sunday)

Center

Radvanice (Loc: 50°34'33.925"N, 16°3'19.697"E) - JWOC 2013 middle

Categories

D10N (line), D10C, D12A, D12B, D14A, D14B, D16B, D18B, DElite, D21A, D21B, D35B, D35C, D40B, D40C, D45B, D45C, D50B, D50C, D55, D60, D65

H10N (line), H10C, H12A, H12B, H14A, H14B, H16B, H18B, HElite, H21A, H21B, H21C, H35B, H35C, H40B, H40C, H45B, H45C, H50B, H50C, H55B, H55C, H60, H65, H70, H75

Some Cotegories may join up together.

H means men, D means women

- for public:

P – category for beginners

T – training category for intermidiate

HDR – category for children with attendance (line)

Entries for these categories are possible also only for one day

It is possible to entry these categories during the competition

Stages, terrains, maps

Friday 26th August 2016 E1

Distance: Middle

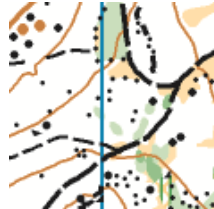
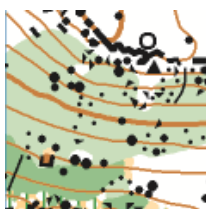
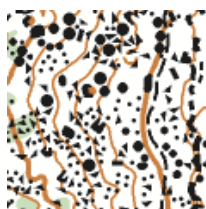
Map: Závora – Přední hradiště 1:10 000, E = 5m, ISOM 2000, water resistant paper, A4

Start: 00 = 15:00, intervals, cat. P, T, HDR can start anytime until time 90

Distances: Center – start approx. 1500 m

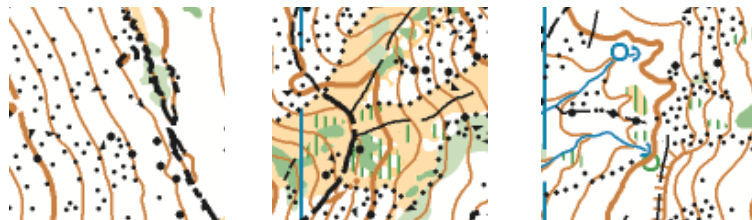
Finish – center approx. 500m

Terrain: hill with many stones, rocks and terrain details



Saturday 27th August 2016 E2

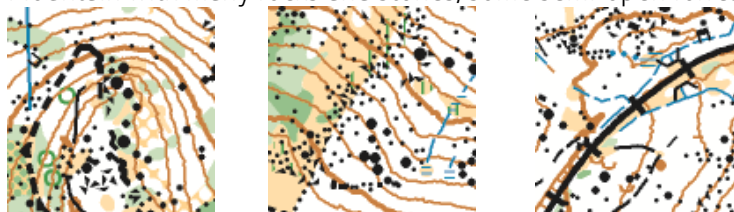
Distance: Long
Map: Závora – Kroupová hora 1:10 000, E = 5m, ISOM 2000, water resistant paper, A3
Start : 00 = 10:00, interval, cat. P, T, HDR can start anytime until time 120
Distancies: Center – start approx. 2500 m
Finish – center approx. 400m
Terrain: hill with many stones, rocks and terrain details



Saturday 27th August 2016 afternoon – After race program

Sunday 28th August 2016 E3

Distance: Shorter long
Map: Závora – Hradiště 1:10 000, E = 5m, ISOM 2000, water resistant paper, A3
Start : 00 = 10:00, handicap, cat. P, T, HDR can start anytime until time 120
Distancies: Center – start approx. 1500 m
Finish – center approx. 0 m
Terrain: Mountain with many rocks and stones, some semi-open forrest with details.



Competition fees

Entries until:	15th July	15th August	during competition
HD10 - 14, HD65-;	300 CZK	390 CZK	450 CZK
HD16 - HD60 ,	420 CZK	510 CZK	600 CZK

one stage: 1/3 of the price

- for public

Entries until:	15th July	15th August	during competition
T	360 CZK	450 CZK	150 CZK/one stage
P, HDR	240 CZK	300 CZK	100 CZK/one stage
SI card borrowing	40 CZK/stage		

Entries after 15th August will be accepted only to the number of free maps
Entries can be paid to:

OK 99 Hradec Kralove, z.s.
Milady Horakove 420/56
500 06 Hradec Kralove
Czech republic

IBAN: CZ2620100000002300721378
SWIFT: FIOBCZPPXXX
Bank: Fio banka Hradec Kralove

Entries

through ORIS (<http://oris.orientacnisporty.cz/Zavod?id=3480&lang=en>).

exceptionally through email prihlasky@ok99.cz. Entry by email is valid only after validation by organizers.

Registration

in the competition center, if you pay in advance it is not necessary to come to the registration
Friday 26th August 12:00-14:30; 19:00-20:00
Saturday 27th August 8:00-9:00; 17:00-18:00
Sunday 28th August 8:00-9:00

Punching system

electronic, SportIdent
If you loose borrowed SI card, we will charge you 700 CZK.

Rules:

Czech rules of orienteering

Accomodation

Organizer will prepare camping for tents in the competition center. From Friday 26th August till Sunday 28th August. In the camping there will be EKO-WC, drinking water, cold showers. There will be buffet with cold and hot food and beer. Camping will be divided into two parts, one close to the buffet, one further.

It will be possible to park your car by the tent

price for camping 160 CZK/person/whole competition

Children till 6 years free of charge

Parking

Car park is in the competition center and it will be charged 50 CZK /whole competition

Kindergarten

During your competiton you can leave your children in our kindergarten.

Winning prices

In elite categories DE and HE first 6 competitors in total get some prices and money (from the winner: 2000 CZK, 1500 CZK, 1000 CZK, 600 CZK, 400 CZK, 250 CZK). In other categories (except P, T, HDR) get first 3 in total results some prices. Competitors in HDR get some sweets in the finish (all of them).

Around...

Adrspach and Teplice sandstone rocks
castle Skaly
fortress Stachelberg
Skanzen Zacler

Monastery Broumov
Monastery in Police nad Metuji
Muzeum Merkur in Police nad Metuji
Mountain Ostas
CHKO Broumovsko
Krkonoše (Giant mountains) – Pec pod Snezkou
And many other interesting places.

Informations

on the internet - cvc2016.ok99.cz

Officials

Head of the competition: Aleš Balcar
tel: +420 739 477 776, e: alesbalcar@seznam.cz
Main Referee: Tomáš Kunart
Course setter E1 Tomáš Vitek
Course setter E2 Jan Panchártek
Referee E2 Radek Kubíček
Course setter E3 Michal a Martina Tihonovi

Sponzors



HRADEC KRÁLOVÉ

