

# Bulletin 2 ... Information

update of 8 May 2019 in yellow

## Date and venue

3. - 8. July 2019 in Pilsen, Autocamp Ostende - Bolevák

## Event type

Individual multi-stage MTBO race. Overall ranking is given by sum of times Stage 1 – Stage 5.

E0 Prologue – training race, not included in overall ranking of event.

O-triathlon relay, additional attraction

## Classification

8., 9. a 10. Rounds of Czech Cup 2019

5. a 6. Rounds of German Cup DCup

2 World masters series events

2 Young guns World series events

## Organizer

[Klub orientačních sportů Slavia Plzeň](#) on behalf of the [Czech O- Federation](#)

## Campsite opening

- 3. July, 14:00

## Prologue – training race

- 3. July: Stage 0 – MTBO Blinduro, not included in overall ranking of MTBO 5 days (ORIS: E1)

## Races

- 4. July: Stage 1 – longer middle, (ORIS: E2)
- 5. July: Stage 2 – sprint, 8. Round of Czech cup, World masters series, Young guns World series, (ORIS: E3) in the evening: O-Triathlon Relays
- 6. July: Stage 3 – middle, 9. Round of Czech cup, 5. Round of German cup, World masters series, Young guns World series (ORIS: E4)
- 7. July: Stage 4 – long, 10. Round of Czech cup, 6. Round of German cup (ORIS: E5)
- 8. July: Stage 5 – semi-free order, pursuit (ORIS: E6)

9. - 12. July – Youth training camp. More information: [Youth training camp](#)

## Event centre

Autocamp Ostende – Bolevák, Pilsen, GPS Loc: 4949.7773050N, 13.3904644E [Mapy.cz – turistická](#)

## Stages – locations, maps, length

Stage	Stage in ORIS	Start 00	Stage centre (Distance from event centre)	Stage location	Stage centre - start	Map	Length M21E/W21E (min)
E0 Training Blinduro	ORIS E1	15:00 – 18:00	Ostende (0km)	Krkavec	0km	1:15 000	Appropriate
E1 middle	ORIS E2	11:00	Ostende (0km)	Letkov	7km	1:15 000	65/60
E2 sprint	ORIS E3	10:00	Ostende (0km)	Zruč - Senec	4,5km	1:5 000	20/20
O-triathlon relay		17:30	Ostende (0km)	Ostende	0km	1: 6 660	0,66 h
E3 middle	ORIS E4	10:00	Město Touškov (13km)	Touškov	< 5 km	1:15 000	60/55
E4 long	ORIS E5	10:00	Město Touškov (13km)	Touškov	< 5 km	1:15 000	115/105
E5 semi-free order	ORIS E6	10:00	Ostende (0km)	Ostende	4,5km	1:5 000	60/55

## Stages – Responsible

Stage	Stage in ORIS	Director	Controller	Course setter
E0	ORIS E1	Robert Anděl	Ondřej Hašek	Jan Václavík
E1	ORIS E2	Robert Anděl	Ondřej Hašek	Michal Tošner
E2	ORIS E3	Robert Anděl	Ondřej Hašek	Martin Les
O-Triathlon		Jan Hašek	Ondřej Hasman	Saška Svobodová
E3	ORIS E4	Robert Anděl	Ondřej Hašek	Tomáš Kamaryt
E4	ORIS E5	Robert Anděl	Tomáš Kamaryt	Ondřej Hašek
E5	ORIS E6	Robert Anděl	Ondřej Hašek	Václav Šňupárek

# Technical information

## Classes

M14, M17, M20, M21E, M21A (+WMS M35), M21B, M40A (+WMS M40, M45), M40B, M50 (+WMS M55), M60 (+WMS M65), M70 (+WMS M75), M80  
W14, W17, W20, W21E, W21A (+WMS W35), W21B, W40 (+WMS W45), W50 (+WMS W55), W60 (+WMS W65), W70 (+WMS W75, W80)  
MW-11, Open

### Children race MW10 (possible with parents)

E1 - 4.7.2019 - MTBO close to Autocamp Ostende, afternoon after main race

E2 - 5.7.2019 - MTBO close to Autocamp Ostende, afternoon after main race

E3 - 6.7.2019 - XC time trial in Touškov, afternoon after main race

E4 - 7.7.2019 - Riding skill test, during main race

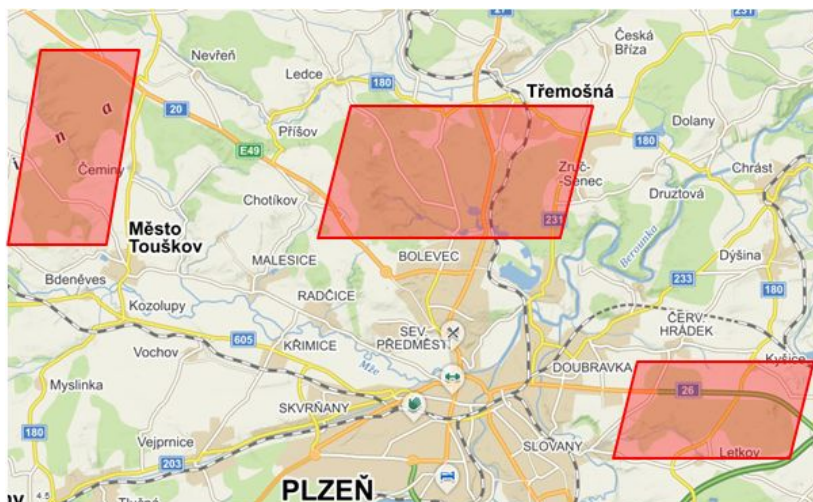
E5 - 8.7.2019 - MTBO close to Autocamp Ostende, at the end of main race

If you wish to be registered in any of the races of World masters series please add a note to your registration in ORIS with year of birth and chosen WMS class  
If there are less than 4 competitors in one class, some categories could be merged (this does not apply for categories M/W-14,-17,-20)

## Punching

SPORT Ident – Competitor can rent a classic SI card from organizers (rental: 1 stage/50 CZK=2 EUR). Request for SI card rental is part of registration in ORIS.  
Non-registered competitors will be asked for a refundable deposit of 1,000,-CZK for each rented SI card. **Remote punching SIAC will be active (20 - 40 cm)**

## Embargoed areas



Embargoed old maps:

[Hoře kořenitá \(2009\)](#)

[Krkavčí singličky \(2015\)](#)

[Am Ende Ostende \(2015\)](#)

[Z Letkova \(2011\)](#)

## Terrain

Flat, hilly, fast, slow, with high, medium and low density of tracks and paths.

## Technical check

Each competitor needs to wear a cycling helmet. Technical check of bikes will be performed for classes **WM10**, WM11, WM14, WM17. All bikes must be equipped with tyres with minimum width of 1.5".

## Registration fees

MTBO 5day registration fee covers:

- starting fee for 5 stages
- prologue MTBO Blinduro
- additional program, such as O-Triathlon relays, every night cultural program

– parking at individual stages locations

- **Entry for all 5 MTBO 5 days stages**

Class M/W:	10,11,14	17,20	21 -80	Open
Before 2.6.	300,-	600,-	1200,-	600,-
Before 16.6.	400,-	800,-	1400,-	800,-
Before 23.6.	500,-	1000,-	1600,-	1000,-

- Later entry fee at event centre is increased by 100% versus original entry fee
- Entry fee of competitors who are not registered at Czech O-Federation is increased by 10%.
- **Entry opening 21.4.2019, 12:00**
- Registration for the MTBO5days also covers the Czech Cup.
- Please register through ORIS online system <http://oris.orientacnisporty.cz>, via this event [MTBO5Days Plzeň](#)
- ORIS user account is required for registration (at least one per club). In case you do not have your user account in ORIS, you can create one at <http://oris.orientacnisporty.cz/Login> (Under the 'Create User' tab)
- Entries and changes after 24.6. are possible only in event centre and depend on actual availability
- In case of any questions related to entries contact [Markéta Lesová](#)
- **Separate registration to Czech Cup races (before 2.6.2019):**

Class M/W:	10, 11,14	17,20	21,40,50,60	Open
8. Czech cup (E2)	60,-	150,-	200,-	100,-
9. Czech cup (E3)	60,-	150,-	200,-	100,-
10. Czech cup (E4)	60,-	150,-	200,-	100,-

- Registration fee will be increased by 25% in period 3.6. – 16.6.2019
- Registration fee will be increased by 50% in period 17.6. – 23.6.2019
- Registration after 23.6.2019 is possible only at event centre with entry fee increased by 100%
- When registering for Czech cup races only, register via 'umbrella' race [MTBO5Days Plzeň](#) as well and select stages 2,3,4.
- O-Triathlon relay: Entry opens after stage 1 and closes the same day at 21:00
- **Payments**
  - Entry fees are in CZK  
For CZK transfer use the account number 2601203427 / 2010 (Fio banka)

- Payment instruction for EUR transactions

The fee that should be paid for your club is calculated by ORIS. However, the fee is listed in Czech crowns (CZK). For EUR payment, please calculate the EUR amount to be paid with the exchange rate of **25,00 CZK/EUR**.

Please use SEPA payment in EUR to our EUR bank account: 2201203452 / 2010

IBAN: CZ262010000002201203452

BIC/SWIFT: FIOBCZPPXXX

Owner of account: Klub orientačních sportů Slavia Plzeň, z. s.

Bank: Fio banka a.s., V Celnici 1028/10, 117 21 Praha 1, IČ 61858374

When making the transaction, please include the 'variable symbol' generated by ORIS in the Event Entries in ORIS

The SEPA payment from Eurozone countries should normally be for free (depends on your bank). In any case, please make sure that any fees for the international bank transfer is covered by the sender and that they are not deducted from the transferred amount. Otherwise we will collect the missing amount at the registration

**Entry is valid only after realization of payment.**

## Accommodation

Organizers booked almost full capacity of Autocamp Ostende, which serves as event centre from July 3<sup>rd</sup> till July 8<sup>th</sup>. To book accommodation use ORIS (additional services). Booking of cabins and bungalows is possible only for all 5 nights.

**Registration and accommodation booking will be activated on 21.4.2019 at 12:00 sharp.**

Accommodation options in the event centre ([Autocamp Ostende – Bolevák](#))

- 2-bed cabin / 5 nights Wednesday - Monday (3000 CZK) – 28 cabins
- 3- bed cabin / 5 nights Wednesday - Monday (4000 CZK) – 5 cabins
- A 4- bed cabin / 5 nights Wednesday - Monday (6000 CZK) – 2 cabins
- B 4- bed cabin / 5 nights Wednesday - Monday (7000 CZK) – 6 cabins
- C 4- bed cabin / 5 nights Wednesday - Monday (7000 CZK) – 6 cabins
- 4- bed bungalow / 5 nights Wednesday - Monday (8500 CZK) – 5 bungalows

- Caravans / 5 nights Wednesday - Monday (2950 CZK) / possible also for single nights (920 CZK) – enough space
- Person (age 15+) in tent / 5 nights Wednesday - Monday (750 CZK) / possible also for single nights (200 CZK) – enough space
- Person (age 10-14) in tent / 5 nights Wednesday - Monday (500 CZK) / possible also for single nights (150 CZK) – enough space
- Person (age<10) in tent for free

Prices of accommodation include parking fee. Parking for additional trailer for bikes cost is 70 CZK/day.

All visitors camping at Ostende aged 18 and above are obliged to provide personal information by filling in a particular form (accessible at ORIS) and handing it in during the presentation. Compulsory fee which is 6 CZK per day for an adult will can be paid either by bank transfer (the same variable symbol as entry) or in cash at the presentation.

Using a shower at the camp side is charged 20 CZK by a cash machine placed in the showers.

To check other possibilities of accommodation nearby search on the internet.

**CAUTION: The accommodation shall be paid before 14 June. Unpaid bookings will be cancelled and released for further booking (on 16.6. at 12:00 CEST)**

## Meals

- Catering will be provided by a designated company in the main MTBO5DAYS tent located in the event centre.
- There is a restaurant in the camp Ostende.

## Parking

Parking cost is included in accommodation fee. It is possible to park inside camp until it is full. Please follow organizer's instruction. Competitors who are not accommodated in the camp are obliged to park on parking place in front of the camp.

## Bike depository

Room will be provided for your bike storage.

## Children depository (babysitting)

In time of race, babysitting will be ensured.

## Claims

Claims can be submitted to main referee with deposit of 200 CZK till 30 minutes after release of official results.

## Price giving ceremony

Prize giving ceremony is planned after each stage **at 20:00**.

And again, you can compete for the jerseys:

- yellow – overall standing leaders in M21E and W21E
- green – the best sprinter of each day
- dot – 4<sup>th</sup> place with the smallest distance to the 3<sup>rd</sup> place
- black – the biggest time gap to winner of the class

**And party will take place every day.**

## Event office hours

- **Prologue MTBO Biinduro** – start to training race is possible without registration. Start will be marked at event centre.
- **5-days MTBO (including Stage 1!)**
  - 3. July 16.00 – 22.00 in event centre (Autocamp Ostende)
  - 4. July 8.00 – 9:30 in event centre (Autocamp Ostende)
- **Individual stages:**
  - evening 18:00 -19:00 before each stage in event centre (Autocamp Ostende)

## Contacts

[Robert Anděl](#) – event director

[Markéta Lesová](#) – accommodation and entry support

[info@mtbo5days.eu](mailto:info@mtbo5days.eu)